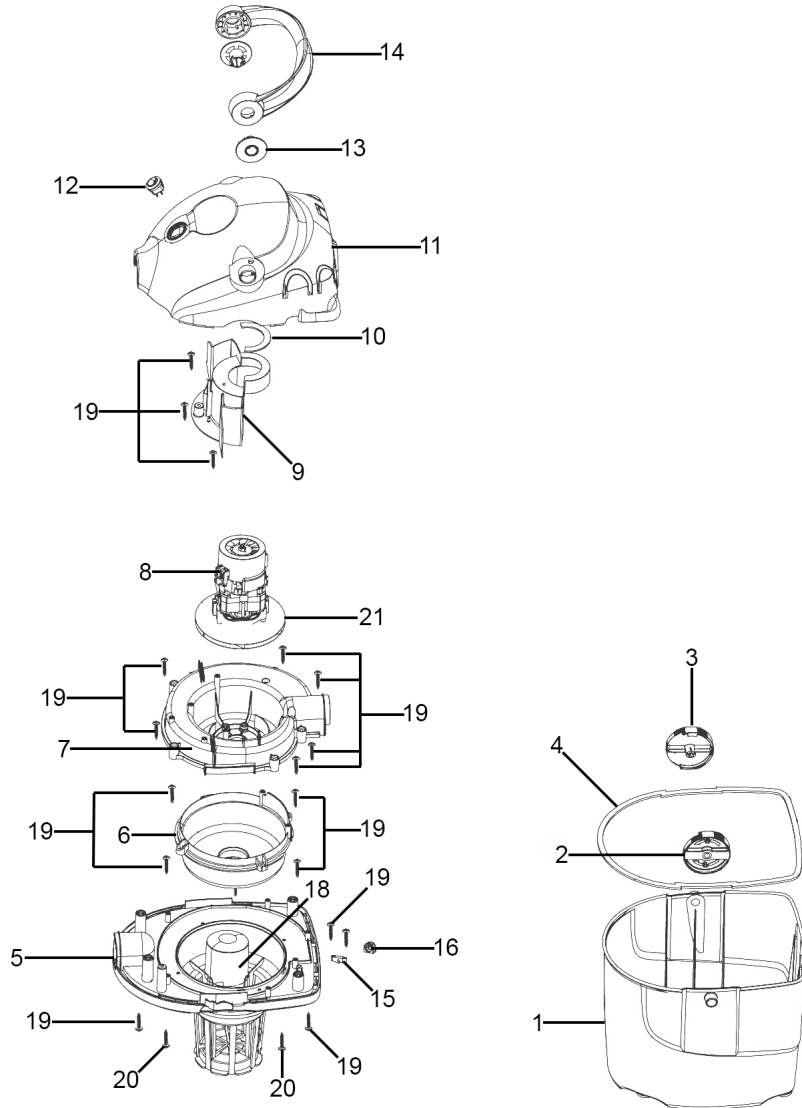




Parts Information:
Vacuum Cleaner Wet & Dry 10L
1000W/230V
Model No: PC100



Item	Part No.	Description
1	PC100.01	Tank
2	PC100.02	Locking Knob A
3	PC100.03	Locking Knob B
4	PC100.04	Seal
5	PC100.05	Cover, Lower
6	PC100.06	Motor Support
7	PC100.07	Cover, Middle
8	PC100.08	Motor
9	PC100.09	Seperator
10	PC100.10	Seal Ring
11	PC100.11	Cover, Upper
12	PC100.12	switch, Power Rocker
13	PC100.13	Cover, Handle

Item	Part No.	Description
14	PC100.14	Handle
15	PC100.15	Cable Clamp
16	PC100.16	Protect Ring, Cable
18	PC100.18	Container
19	GL57.20	Flanged Rd Head S/T Screw M3.8 x 16mm
20	PC100.20	Rd Head S/T Security Screw M4 x 15mm
21	PC100.21	Impeller
--	MC2CX0.75	Mains Cable (Not Shown)
--	PC100.ACC1	Flexible Hose (Not Shown)
--	PC100.ACC2	Foam Filter (Not Shown)
--	PC100.ACC3	Upholstery Nozzle (Not Shown)
--	PC100.ACC4	Filter Bag (Not Shown)
--	PC300SD.V3-54	Crevice Tool (Not Shown)

NOTE: It is our policy to continually improve products and as such we reserve the right to alter data, specifications and component parts without prior notice. There may be alternative versions of this product, please contact us should you require this information.

IMPORTANT: No liability is accepted for incorrect use of product. Spare parts must be fitted by a competent person

WARRANTY: Guarantee is 12 months from purchase date, proof of which will be required for any claim.

Sealey Group, Kempson Way, Suffolk Business Park, Bury St Edmunds, Suffolk. IP32 7AR



01284 757500



01284 703534



sales@sealey.co.uk



www.sealey.co.uk